

13/16"-62P SIDE WALL PANELS

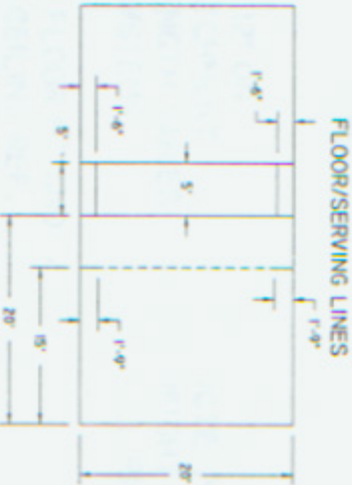


RIGHT SIDE WALL

1/8"-62P FRONT WALL PANELS



FRONT WALL



NOTE: BACK WALL HEIGHT IS OPTIONAL FROM 12'-0" MIN. TO ACCOMMODATE BALCONY.

13/16"-62P BACK WALL



BACK WALL



LEFT SIDE WALL

DWG. NUMBER

100

REVISION DATE

5/17/00

DESCRIPTION

RACQUETBALL COURT PANEL CONFIGURATION

SCALE

NTS

D.B.

MTB

DATE

2/4/00

APPROVED BY:

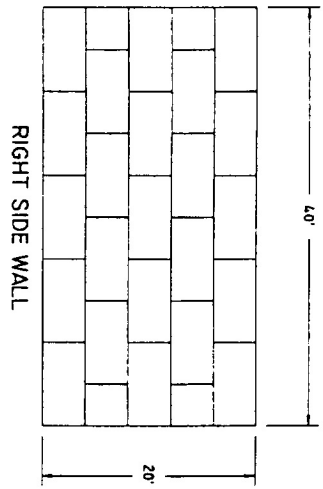
DATE

FRIBESIN

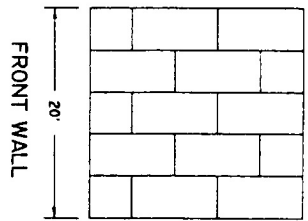
2125 E. ANDERSON AVE.
P.O. BOX 88
MILWAUKEE, WI 53204
PHONE: (414) 341-1447
FAX: (414) 341-1448

NOTES: THIS DRAWING CONTAINS INFORMATION THAT FRIBESIN, INC. IS PROVIDING TO YOU UNDER A LICENSED AGREEMENT. ANY REPRODUCTION OR TRANSMISSION OF THIS INFORMATION WITHOUT THE WRITTEN PERMISSION OF FRIBESIN, INC. IS PROHIBITED.

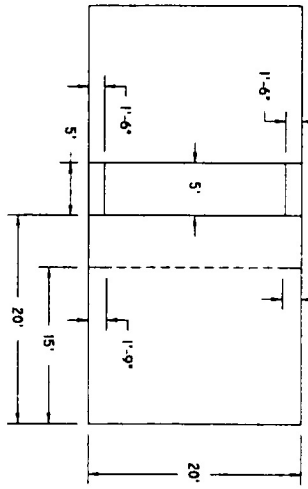
13/16"-62P SIDE WALL PANELS



1/8"-62P FRONT WALL PANELS

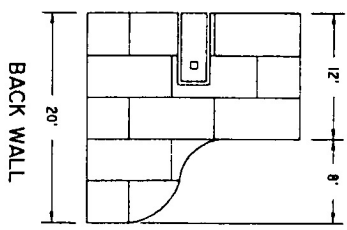


FLOOR/SERVING LINES

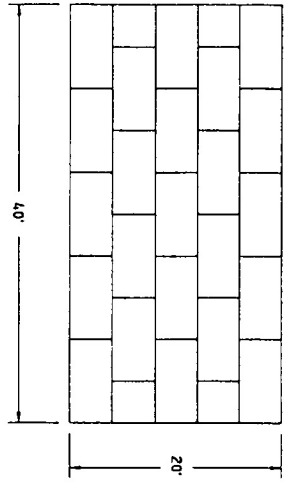


NOTE: BACK WALL HEIGHT IS OPTIONAL FROM 12'-0" MIN. TO ACCOMMODATE BALCONY.

13/16"-62P BACK WALL



LEFT SIDE WALL



DWG. NUMBER **100**

REVISION DATE **5/17/00**

DESCRIPTION

RACQUETBALL COURT PANEL CONFIGURATION

SCALE **NTS**

D.B. **MTB**

DATE **2/4/00**

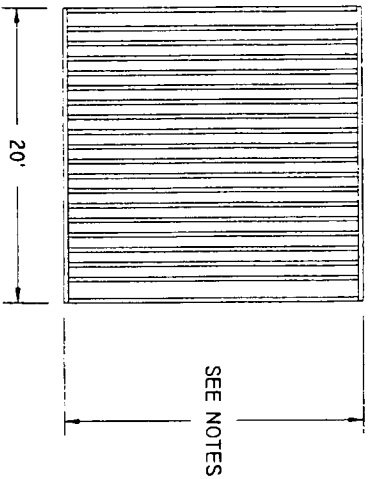
APPROVED BY:

DATE

FIBERESIN INDUSTRIES, INC.
 17031 E. WISCONSIN AVE.
 P.O. BOX 88
 FOND DU LAC, WI 53445
 PHONE: (262) 567-4427
 FAX: (262) 567-4814

NOTICE: THIS DRAWING CONTAINS INFORMATION THAT FIBERESIN, INC. CONSIDERS PROPRIETARY AND CONFIDENTIAL. NO PORTION OF THIS DRAWING MAY BE REPRODUCED OR COPIED WITHOUT WRITTEN PERMISSION OF FIBERESIN, INC.

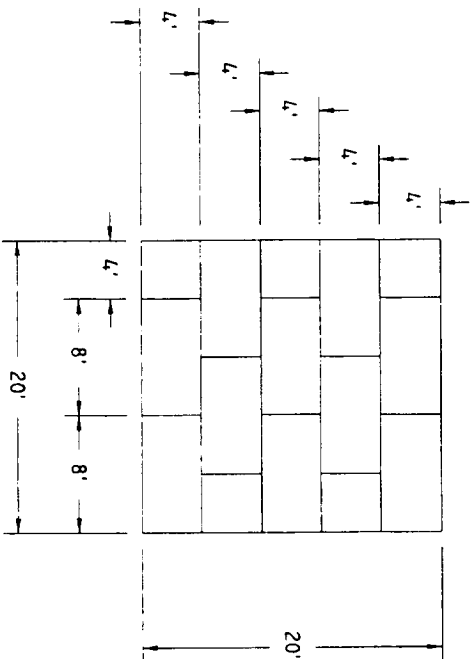
FRAMING DETAIL



NOTE: 3 5/8" 18GA. STEEL "C" STUDS 12" ON CENTER TYP. W/INCIDENTAL ATTACHMENT TO BUILDING STRUCTURE. STUD LENGTH VARIES WITH TYPE OF FLOOR & CEILING SYSTEMS.

STUD LENGTH = 20'-0" + FINISHED FLOOR HT. AND CEILING FRAMING MIN. FOR JOIST CEILING REF. DRAWINGS #121 & #131. STUD LENGTH = 20'-0" + FINISHED FLOOR HT. + 2" FOR SUSPENDED CEILING REF. DRAWINGS #121 & #132

PANEL DETAIL

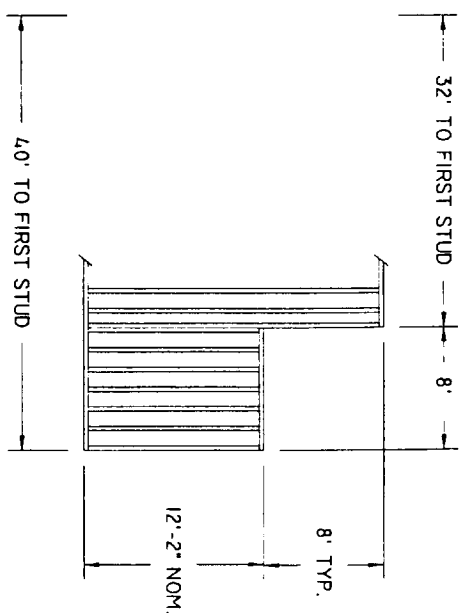
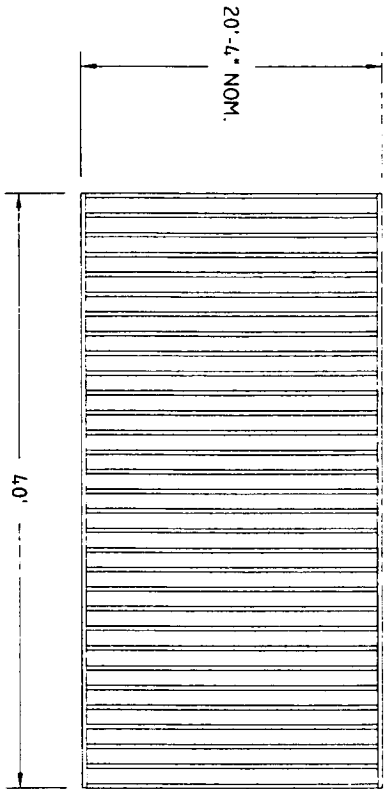


NOTE: PANEL BASE LINE APPROX. 2" ABOVE SLAB. HEIGHT VARIES WITH TYPE OF FLOOR. BEGAN WITH FULL RIGHT PANEL.

DWG. NUMBER	101
REVISION DATE	3/21/00
DESCRIPTION	RACQUETBALL FRONT WALL FRAMING & PANEL CONFIGURATION

SCALE	D.B.	DATE	APPROVED BY:	DATE
NTS	MTB	2/4/00		

31201 E. WISCONSIN AVE
 P.O. BOX 88
 OCCONOMO WIS. WI 53064
 PHONE: (262) 567-4277
 FAX: (262) 567-4444
 NOTICE: THIS DRAWING CONTAINS INFORMATION THAT FIBERESIN HAS DEVELOPED AND IS PROTECTED BY PATENT RIGHTS. NO REPRODUCTION OR COPY WITHOUT WRITTEN PERMISSION OF FIBERESIN, INC.



NOTE: STUDS ARE 16" ON CENTER. MOST INSTALLATIONS REQUIRE 3 $\frac{5}{8}$ " 18 GA. STEEL "C" STUDS ON EXTERIOR WALLS INCIDENTALLY ATTACHED TO THE BUILDING STRUCTURE. 6" 18 GA. STEEL "C" STUDS ARE GENERALLY USED FOR THE COMMON WALL STRUCTURE. THE CUTOUT SHOWN AT 12'-0" FINISH HEIGHT IS OPTIONAL AND THE HEIGHT MAY BE ANYTHING BETWEEN 12'-0" AND 20'-0". THE CUTOUT HEIGHT IS GENERALLY DESIGNED TO COINCIDE WITH THE BACK WALL HEIGHT IN BALCONY APPLICATIONS.

HEIGHT VARIES WITH TYPE OF FLOOR & BALCONY HEIGHT. SEE NOTES

DWG. NUMBER **102**

REVISION DATE 3/21/00

DESCRIPTION

RACQUETBALL SIDE WALL FRAMING

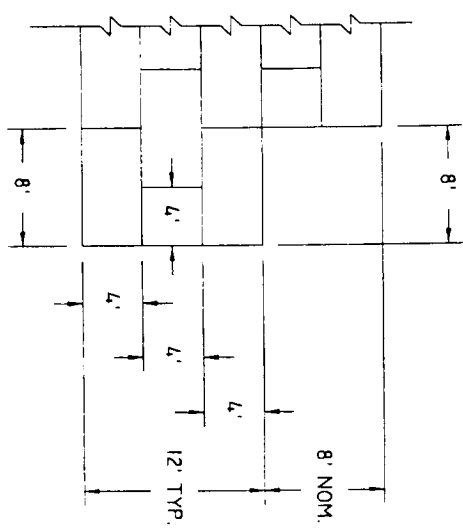
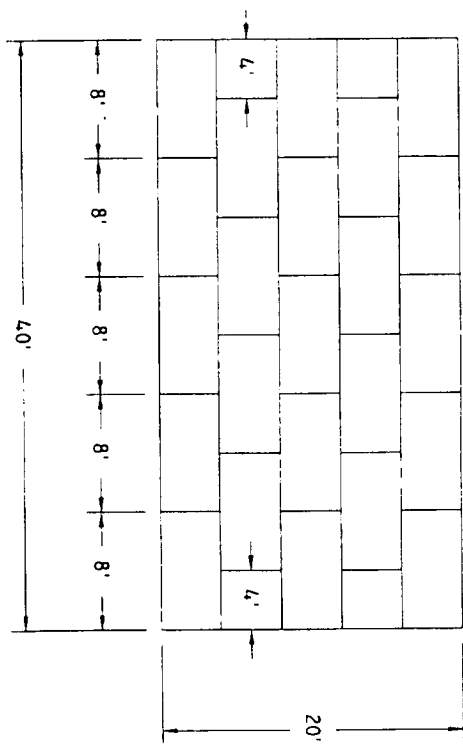
SCALE NTS

D.B. MTB DATE 2/4/00

APPROVED BY: DATE

FIBERESIN INDUSTRIES, INC.
 37031 E. WISCONSIN AVE
 P.O. BOX 88 WI 53096
 WISCONSIN 53122
 F. AX. (262) 561-1811
 NOTICE: THIS DRAWING CONTAINS INFORMATION THAT FIBERESIN AND INC. CONSIDERS
 PROPRIETARY AND CONFIDENTIAL. NO PORTION OF THIS DRAWING MAY BE REPRODUCED
 OR COPIED WITHOUT WRITTEN PERMISSION OF FIBERESIN, INC.

OPTIONAL "CUT-OUT" AT REAR WALL



NOTE: PANEL BASE LINE APPROX. 2" ABOVE SLAB.
VARIES WITH TYPE OF FLOOR.

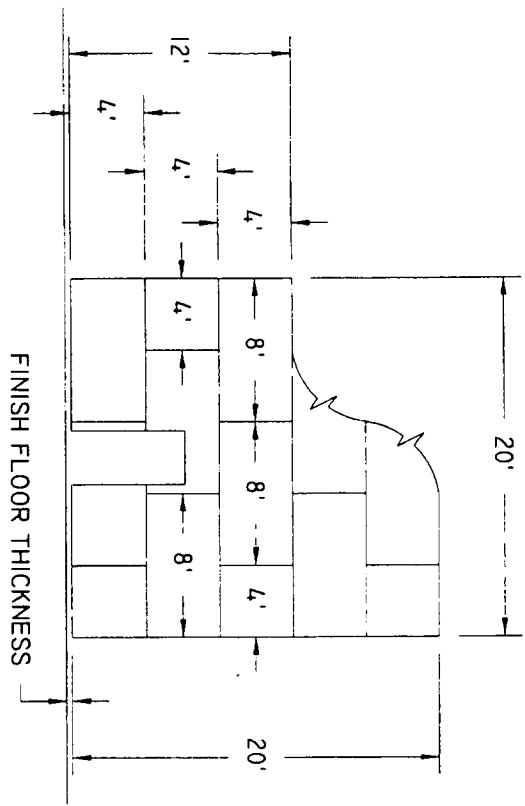
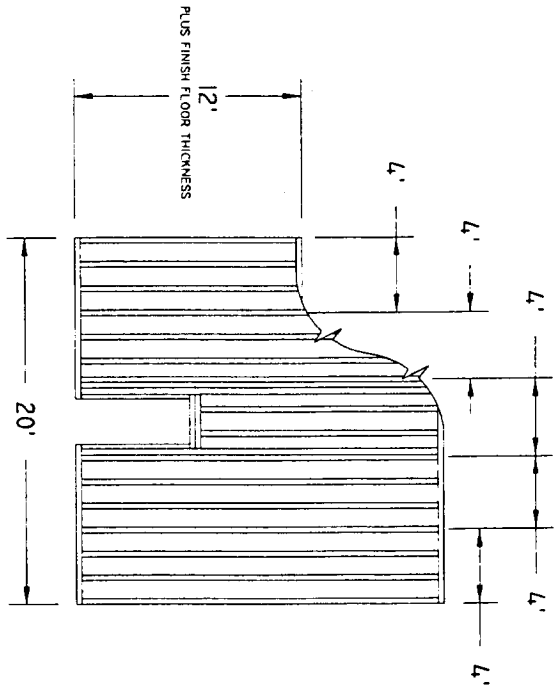
NOTE: HEIGHT OF CUTOUT IS VARIABLE. SEE FRAMING DETAIL.
BENEFITS OF CUTOUT:

- 1) REDUCED MATERIAL COST
- 2) IMPROVED AIR MOVEMENT
- 3) IMPROVED ESTHETICS W/BALCONY APPLICATIONS
- 4) NOISE DISPERSION
- 5) LESS "CLOSED IN" FEELING IN THE COURT AREA

DWG. NUMBER	103
REVISION DATE	3/21/00
DESCRIPTION	RACQUETBALL SIDE WALL PANEL CONFIGURATION

SCALE	D.B.	DATE	APPROVED BY:	DATE
NTS	MTB	2/4/00		

FIBERESIN INDUSTRIES, INC.
 37031 E. WISCONSIN AVE.
 P.O. BOX 88
 OGDONSVILLE, WI 53066
 PHONE (262) 593-4177
 FAX (262) 593-4411
 WWW.FIBERESIN.COM
 NOTICE: THIS DRAWING IS THE PROPERTY OF FIBERESIN INDUSTRIES, INC. CONSULTING ENGINEERS. IT IS TO BE USED ONLY FOR THE PROJECT AND SITE SPECIFICALLY IDENTIFIED HEREON. ANY REPRODUCTION OR COPIES WITHOUT WRITTEN PERMISSION OF FIBERESIN INDUSTRIES, INC. IS STRICTLY PROHIBITED.



NOTES:

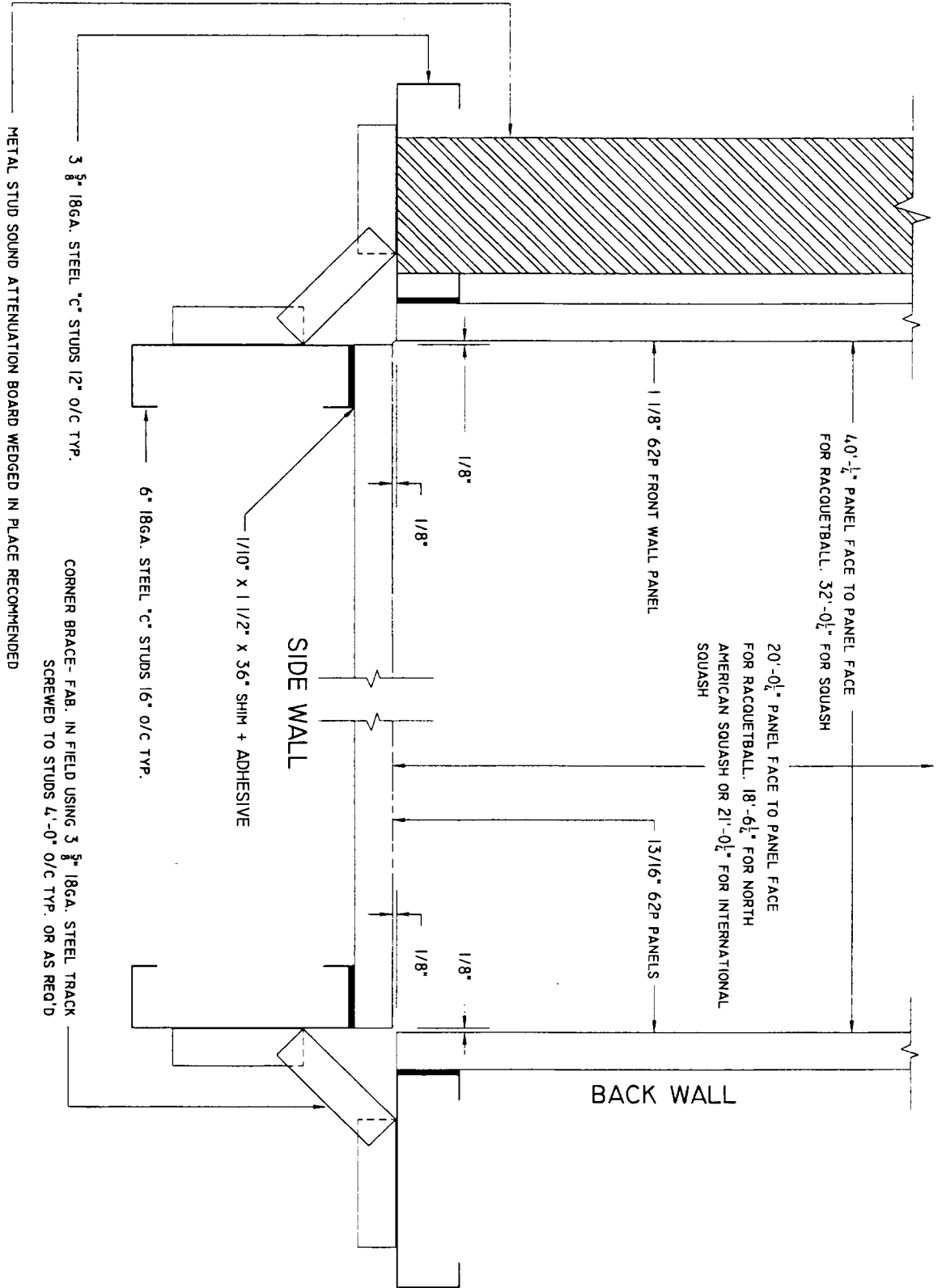
- 1) 6" 18GA. STEEL "C" STUDS 16" ON CENTER TYP.
- 2) BACK WALL MAY BE ANY HEIGHT BETWEEN 12'-0" MIN. & 20'-0" CEILING HEIGHT PLUS FINISHED FLOOR. HEIGHTS OF LESS THAN 20'-0" TO ACCOMMODATE BALCONY.
- 3) SEE DRAWING #106 FOR DOOR FRAMING DETAIL
- 4) DOOR CAN BE ANY WHERE. CENTER REAR WALL IS PREFERRED.

DWG. NUMBER	104
REVISION DATE	3/21/00

DESCRIPTION	SCALE	D.B.	DATE	APPROVED BY:	DATE
RACQUETBALL BACK WALL FRAMING & PANEL CONFIGURATION	NTS	MTB	2/4/00		

FIBERESIN INDUSTRIES, INC.
 15011 S. WISCONSIN AVE.
 P.O. BOX 88
 OGDONOVIC, WI 53066
 PHONE: (262) 561-4271
 FAX: (262) 561-7416
 NOTICE: THIS DRAWING CONTAINS INFORMATION THAT FIBERESIN AND INC. CONSIDERS AS CONFIDENTIAL. ANY UNAUTHORIZED REPRODUCTION OR TRANSMISSION OF FIBERESIN AND INC. IS PROHIBITED.

FRONT WALL



DWG. NUMBER **105**

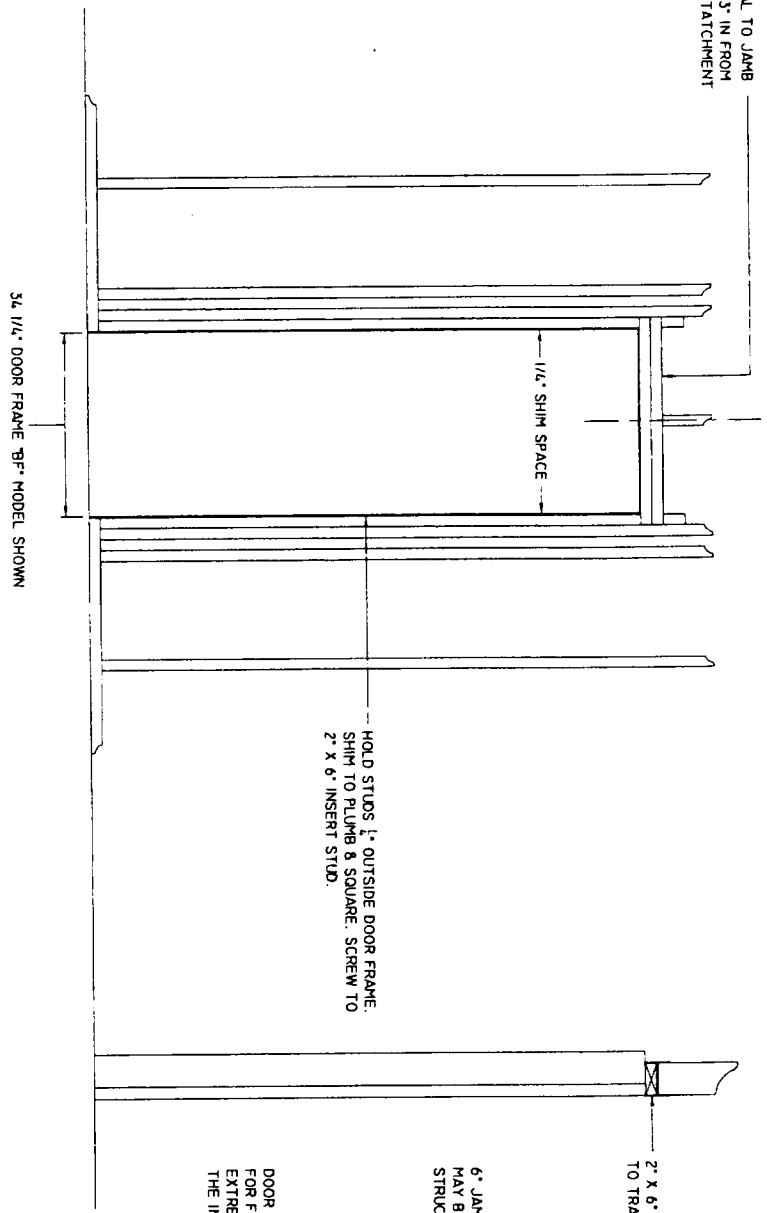
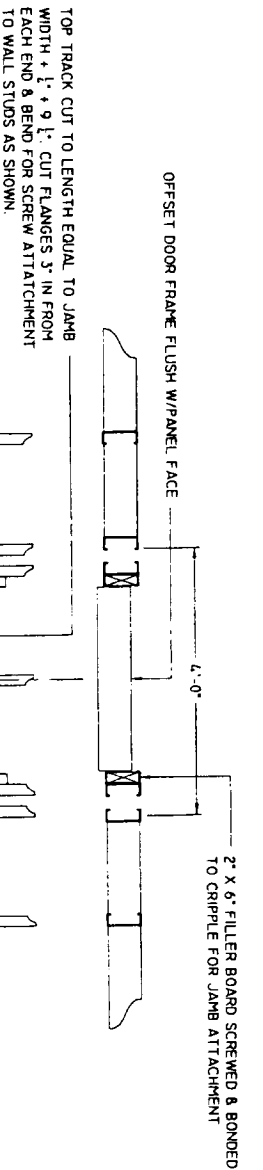
REVISION DATE **3/21/00**

DESCRIPTION **COURT WALL FRAMING CORNER DETAIL**

SCALE	D.B.	DATE	APPROVED BY:	DATE
NTS	MTB	2/7/00		

FIBERESTIN INDUSTRIES, INC.
 3701 E. WISCONSIN AVE.
 COOK COUNTY, ILL. 60018
 PHONE: (708) 567-4427
 FAX: (708) 567-4818

NOTICE: THIS DRAWING CONTAINS INFORMATION THAT FIBERESTIN AND INC. CONSIDERS PROPRIETARY AND CONFIDENTIAL. NO PORTION OF THIS DRAWING MAY BE REPRODUCED OR COPIED BY ANY MEANS WITHOUT PERMISSION OF FIBERESTIN AND INC.



2" X 6" FILLER BOARD SCREWED & BONDED TO CRIPPLE FOR JAMB ATTACHMENT

2" X 6" FILLER BOARD SCREWED & BONDED TO TRACK FOR ATTACHMENT AT TOP IF REQ'D

6" JAMB WIDTH SHOWN, OTHER JAMB WIDTHS MAY BE ORDERED TO ACCOMMODATE OTHER STRUCTURAL REQUIREMENTS.

DOOR SILL MAY BE REMOVED AND STYLES CUT FOR FLUSH INSTALLATION TO EXISTING FLOOR. EXTREME CARE MUST BE EXERCISED DURING THE INSTALLATION OF A MODIFIED DOOR.

HOLD STUDS 1" OUTSIDE DOOR FRAME SHIM TO PLUMB & SQUARE. SCREW TO 2" X 6" INSERT STUD.

36 1/4" DOOR FRAME "BF" MODEL SHOWN

SEE BROCHURE NO. OW 15 OR OW 18 FOR DOOR SIZES & DETAILS

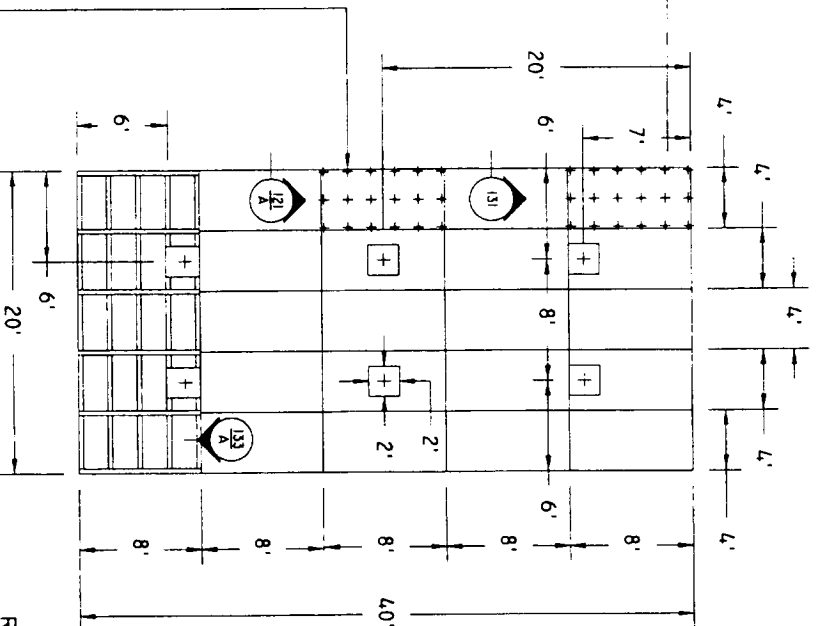
NOTE: ROUGH OPENING HEIGHT CALCULATION: THE 1 3/4" DOOR SILL SHOULD BE SLIGHTLY ABOVE THE FINISHED FLOOR. IF FINISHED FLOOR IS MORE THAN 1 3/4" CALCULATE AS FOLLOWS: FLOOR THICKNESS + RELIEF IF ANY + FRAME HT. + 1" SHIM SPACE. CUT WALL PANELS 1" SHORT OF FRAME. (EXPANSION ALLOWANCE) FILL SEAM WITH CAULK.

DWG. NUMBER	106
REVISION DATE	3/21/00
DESCRIPTION	COURT DOOR FRAMING DETAIL

SCALE	D.B.	DATE	APPROVED BY:	DATE
NTS	MTB	2/7/00		

17811 E. WISCONSIN AVE
 P.O. BOX 88
 OCONGOWOC, WI 53066
 PHONE: (262) 567-1427
 FAX: (262) 567-1416
 NOTICE THIS DRAWING CONTAINS INFORMATION THAT FIBERESIN AND ITS CONCRETE
 PRODUCTS ARE REGISTERED TRADEMARKS OF FIBERESIN AND ITS CONCRETE
 PRODUCTS.

NOTE: CONCEALED SPLINE ATTACHMENT REQ'S THRU THE FACE SCREWS TO JOISTS IN CENTER OF FIELD AS SHOWN

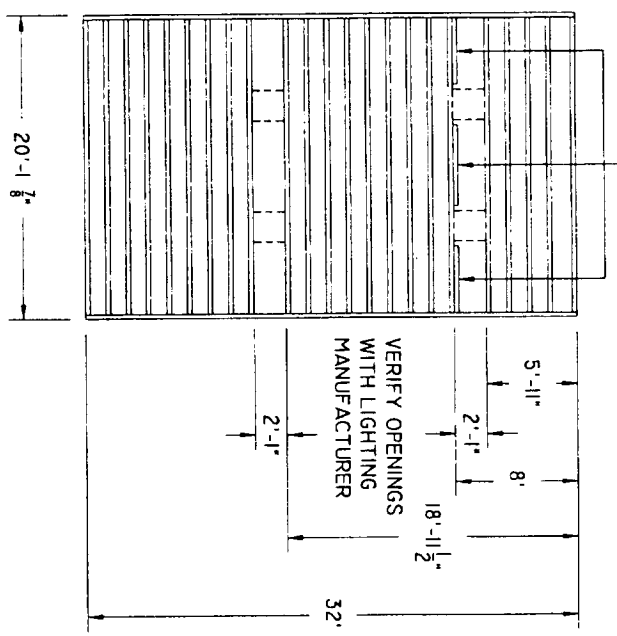


NOTE: SCREW ATTACHMENT REQ'S THRU THE FACE ATTACHMENT AROUND PERIMETER TO EACH JOIST & IN CENTER OF FIELD AS SHOWN

FRONT WALL

REAR 8'-0" IN 2'-0" X 4'-0" ACOUSTIC PANELS OPTIONAL
 IMPORTANT NOTE: FIXTURE FRAMES FOR INSTALLATION IN ACOUSTIC ARE LIKELY TO BE DIFFERENT. VERIFY WITH ELECTRICAL CONTRACTOR.

NOTES: PROVIDE ATTACHMENT STRIP (AS NAILER) FOR ATTACHMENT OF BACK EDGE OF FIRST COURSE OF PANELS. 6" 16GA. STEEL "C" JOIST 1/8" ON CENTER TYP.



2" X 4'-0" X 8'-0" RECREATION COURT PANELS WITH CONCEALED SPLINE & THRU FACE ATTACHMENT SYSTEMS AVAILABLE.
 6 FIXTURE H.I.D. LIGHT SYSTEM SHOWN. OTHER CONFIGURATIONS & LIGHT TYPES AVAILABLE.

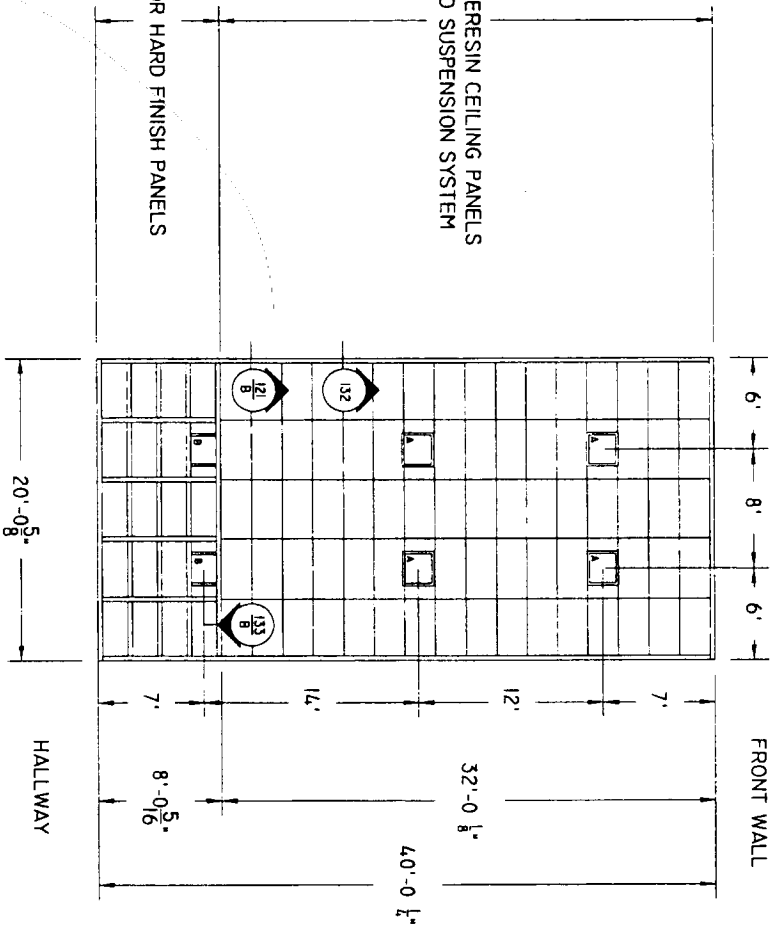
DWG. NUMBER	107
REVISION DATE	3/21/00
DESCRIPTION	RACQUETBALL JOIST CEILING FRAMING & PANEL CONFIGURATION

SCALE	D.B.	DATE	APPROVED BY:	DATE
NTS	MTB	2/7/00		

3101 E. WISCONSIN AVE
 P.O. BOX 88
 OGDONOVOC, WI 53066
 PHONE: (262) 591-4271
 FAX: (262) 591-4272
 NOTICE: THIS DRAWING CONTAINS INFORMATION OF THE PROPRIETARY RIGHTS OF FIBERESIN, INC. AND IS TO BE USED ONLY FOR THE PROJECT AND SITE SPECIFICALLY IDENTIFIED HEREON. ANY REPRODUCTION OR COPIES WITHOUT WRITTEN PERMISSION OF FIBERESIN, INC. ARE PROHIBITED.

2'-0" X 4'-0" FIBERESIN CEILING PANELS
 CONCEALED GRID SUSPENSION SYSTEM

LAY-IN ACOUSTIC OR HARD FINISH PANELS



- NOTES:
- 1) FIXTURES (A) REQUIRE FRAMES COMPATIBLE WITH 5/8" THICK PANELS. VERIFY WITH ELECTRICAL CONTRACTOR.
 - 2) FIXTURES (B) REQUIRE FRAMES COMPATIBLE WITH LAY IN GRID SUSPENSION SYSTEM. VERIFY WITH ELECTRICAL CONTRACTOR.
 - 3) 6 FIXTURES H.I.D. LIGHT SYSTEM SHOWN. OTHER CONFIGURATIONS & LIGHT TYPES AVAILABLE.
 - 4) PANELS FABRICATED TO ACCOMMODATE GRID SYSTEM USED.

DWG. NUMBER **108**

REVISION DATE 3/21/00

DESCRIPTION

RACQUETBALL SUSPENDED CEILING
 CONCEALED GRID FAC SYSTEM

SCALE NTS

D.B. MTB

DATE 2/7/00

APPROVED BY:

DATE

FIBERESIN INDUSTRIES, INC.
 3191 E. AURORA AVE.
 P.O. BOX 88
 OGDON, WISCONSIN 53066
 PHONE: (262) 567-4277
 FAX: (262) 567-4811

NOTICE: THIS DRAWING CONTAINS INFORMATION THAT FIBERESIN AND INC. CONSIDER TO BE CONFIDENTIAL. ANY DISCLOSURE OR REPRODUCTION OF THIS DRAWING WITHOUT WRITTEN PERMISSION OF FIBERESIN AND INC. IS PROHIBITED.